

# Sinus Elevation Kit

Best selection for  
Sinus graft



# Sinus Elevation Kit

004 **I. MICA Kit™**

009 **II. MILA Kit™**

013 **III. Sinus Combination Kit**

016 **IV. Simple Sinus Kit**

017 **V. Easy Sinus Flexible Curette**

# Sinus

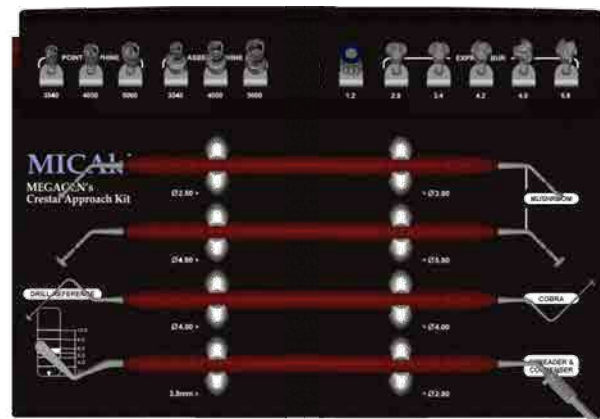
## I. Crestal approach MICA kit™

(MegaGen Implant Crestal Approach Kit)

Ref.C

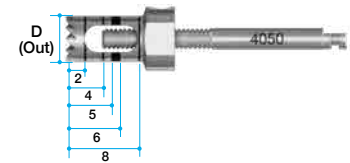
SGIS3000

### ➔ MICA kit Components



#### ASBE Trephine Bur

Diameter (In / Out)	Length (mm)	Ref.C
Ø3.5/ Ø4.0	2/4/5/6/8 Marking	ASBESS34
Ø4.0/ Ø5.0		ASBESS45
Ø5.0/ Ø6.0		ASBESS56



#### Point Trephine Bur

Diameter (In / Out)	Length (mm)	Ref.C
Ø3.5/ Ø4.0	2 Marking	SPTB3540
Ø4.0/ Ø5.0		SPTB4050
Ø5.0/ Ø6.0		SPTB5060



#### Mushroom

Diameter (In / Out)	Length (mm)	Ref.C
Ø2.8/ Ø3.8	2/4/5/6/8/10 Marking	SMR2838
Ø4.8/ Ø5.8		SMR4858



## Cobra

Diameter	Length (mm)	Ref.C
4	-	SCB401



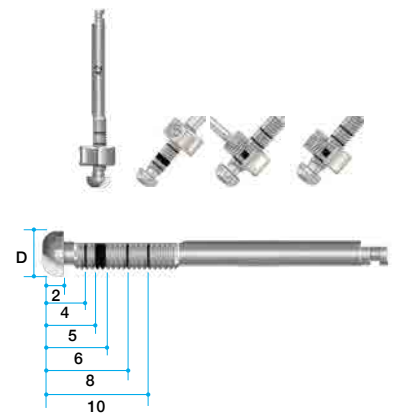
## Hand Driver

Type	Length (mm)	Ref.C
1.2 Hex	10	TCMHDS1200



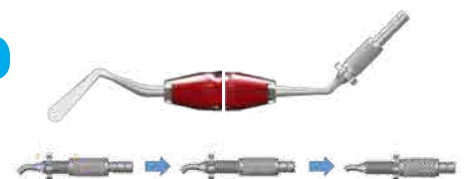
## Sinus Express Bur

Diameter	Length (mm)	Ref.C
Ø2.8	2/4/5/6/8/10 Marking	EB28
Ø3.4		EB34
Ø4.2		EB42
Ø4.8		EB48
Ø5.8		EB58



## Spreader & Condenser

Diameter	Length (mm)	Ref.C
Ø2.8/Ø3.8	2/4/5/6/8/10 Grooving	SSC3828



## ► MICA kit Characteristics & Advantages

### NEW Express Bur

Combined function of Diamond Drill and Reamer Drill

#### 1. Cleansibility

The smooth surface makes cleaning easy and leaves no residue after cleaning.

#### 2. Safety

Stopper provides safe drilling without damaging a membrane even when visibility is poor.

#### 3. Repeated use

Bone chips can be easily removed without getting stuck, so longer life is guaranteed.

#### 4. Cutting capability

Its excellent bone cutting capability eliminates the need to use of the point or ASBE trephine burs.

#### ① Cleansibility



Diamond Drill

Express Bur

#### ② Safety



Egg shell test

Diamond Drill

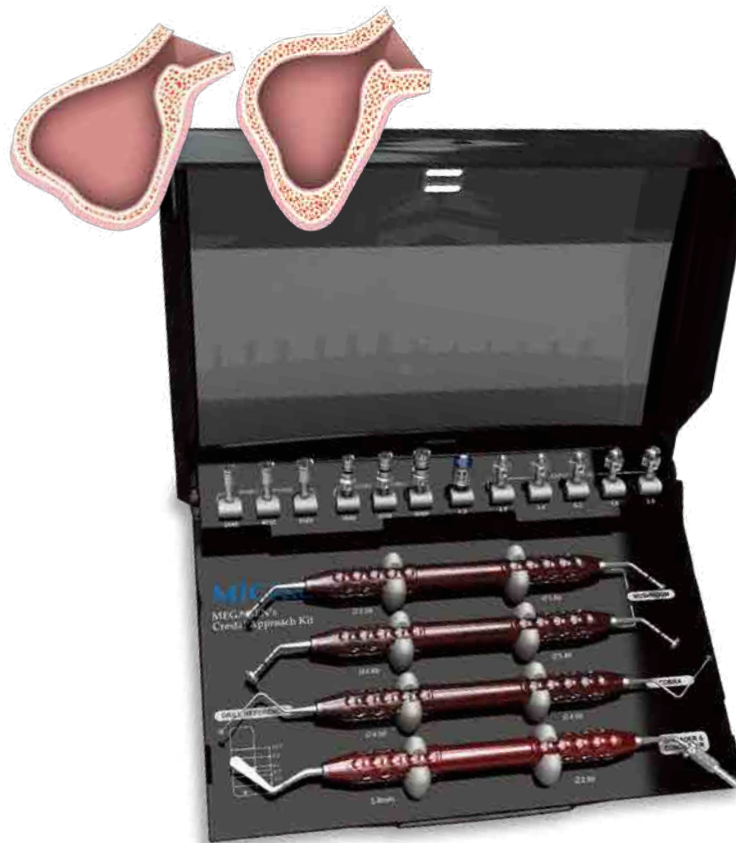
Express Bur

#### ③ Repeated use

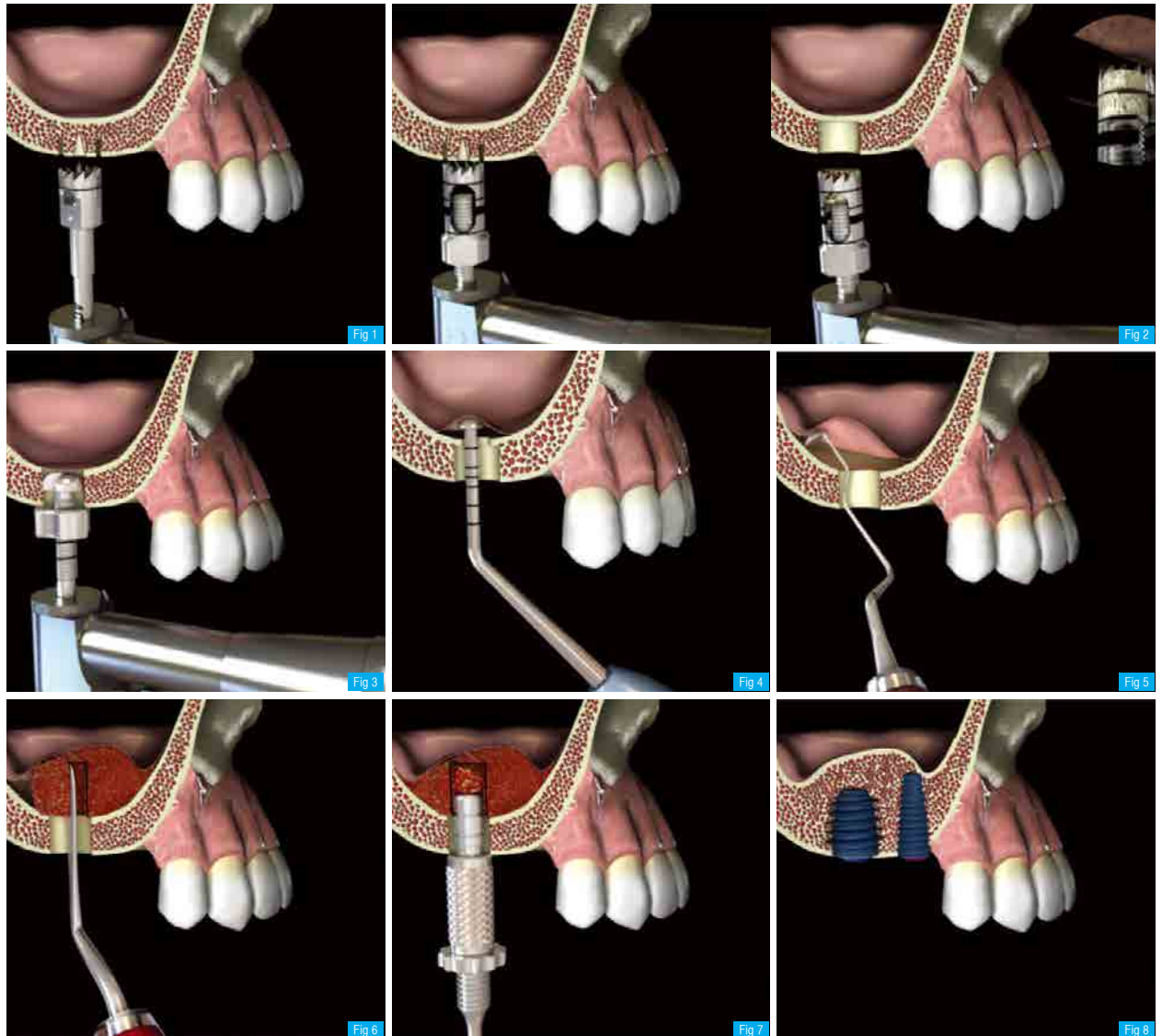


Diamond Drill

Express Bur



## ► How to use Crestal approach



**Fig 1.** Drill with a Point Trepine Bur : 2mm at a time until the laser marking is reached

**Fig 2.** Drill with ASBE Trepine Bur until 1-2mm of bone is left and break the bone by slightly tilting the bur  
Remove the collected bone in the trephine by unscrewing the Mini Screw and rotating the shank.

**Fig 3.** Adjust the position of the stopper to 1mm longer than the remaining bone height and drill with a Express Bur 0.7-1mm smaller in size than the diameter of the fixture

**Fig 4.** Use the Mushroom to lift the membrane through the hole made.

**Fig 5.** Lift membrane using the Cobra

**Fig 6.** Graft the harvested bone and alloplastic material using the Spreader

**Fig 7.** Adjust the stopper of Condenser and fill the bone material up to desired depth by pressing

**Fig 8.** Install fixtures into the holes

## ➔ Clinical Cases - Courtesy of Dr. Samuel Lee

**Fig 1.** Diagnosis with CT

**Fig 2.** Before surgery

**Fig 3.** Flap reflection

**Fig 4.** ASBE Trepine Bur & Express Bur: expand the hole

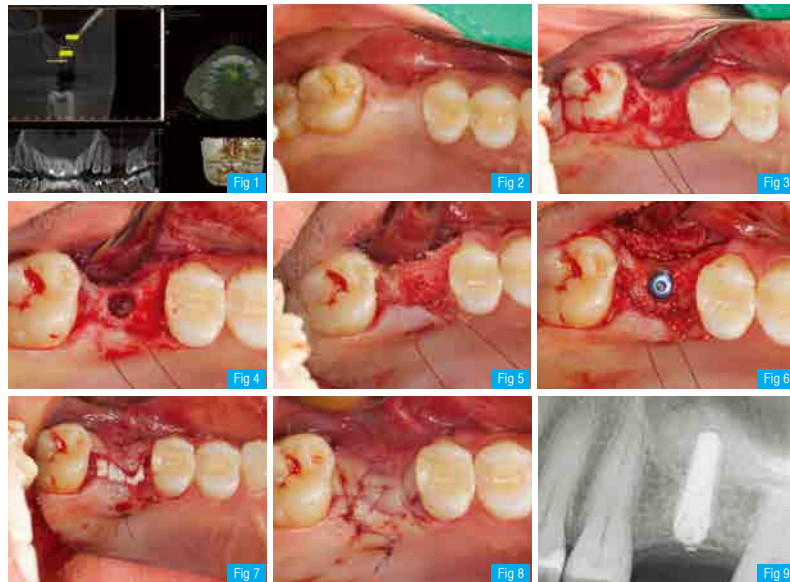
**Fig 5.** Spreader & Condenser : bone graft & condensation

**Fig 6.** Place a fixture

**Fig 7.** Graft any buccal defect and place a collagen membrane

**Fig 8.** Suture

**Fig 9.** Postoperative intra-oral radiograph



**Fig 1.** Intra-oral radiograph(before) surgery

**Fig 2.** Point Trepine Bur : mark a exact point to drill

**Fig 3.** ASBE Trepine Bur : make a hole

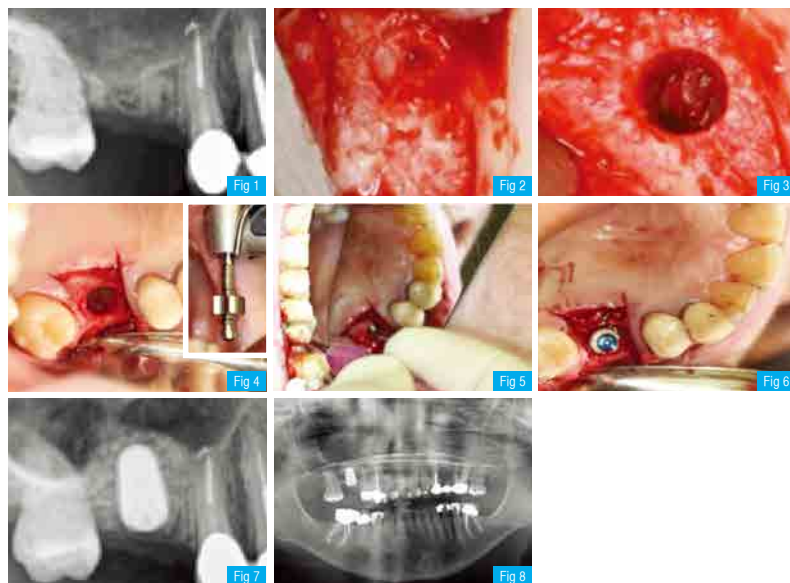
**Fig 4.** Express Bur : expand the hole

**Fig 5.** Spreader & Condenser : bone graft condensation

**Fig 6.** Place a fixture

**Fig 7.** Intra-oral radiograph (after) surgery

**Fig 8.** Postoperative panoramic view





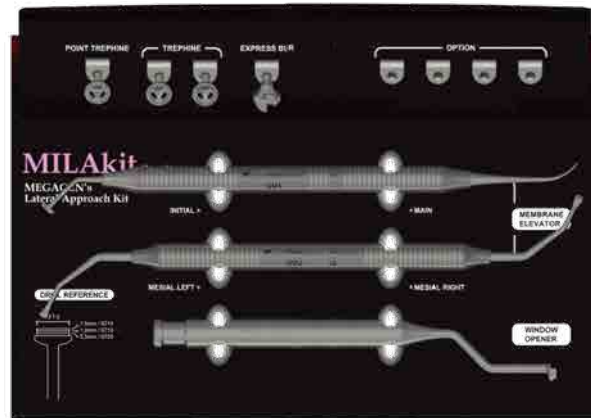
## II. Lateral approach MILA kit™

(MegaGen Implant Lateral Approach Kit)

Ref.C

KLSCN3000

### ➔ MILA kit Components



#### Point Trehphine Bur

Diameter (In / Out)	Length (mm)	Ref.C
Ø6.5 / Ø7.5	0.5	TLSTBU6705



#### Lateral Trehphine Bur

Diameter (In / Out)	Length (mm)	Ref.C
Ø6.5 / Ø7.5	1	TLSTBU6710
Ø6.5 / Ø7.5	1.5	TLSTBU6715



#### Window Opener

Diameter (In / Out)	Length (mm)	Ref.C
Ø6.5 / Ø7.5	1.7	TLSWO6715



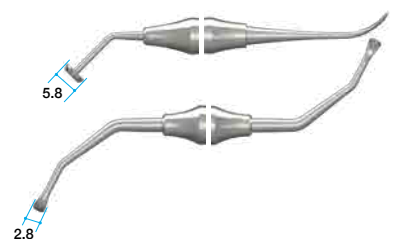
#### Express Bur

Diameter	Length (mm)	Ref.C
Ø7.0	2/4/5/6/8/10 Marking	EB70

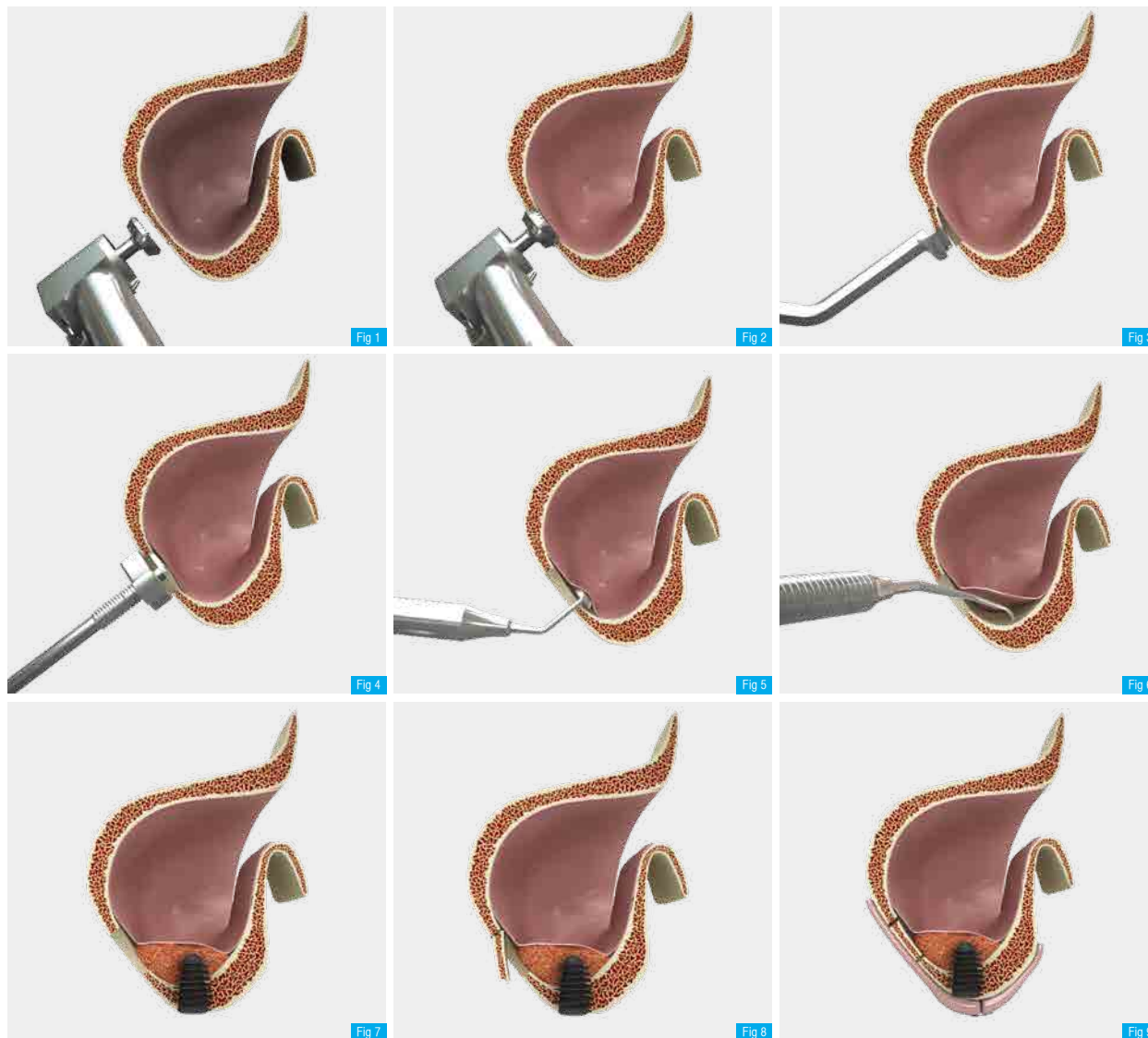


#### Membrane Elevator

Diameter	Length (mm)	Ref.C
Ø5.8	-	TLSME001
2.8	-	TLSME002



## ►► How to use Lateral approach



**Fig 1.** Using the Point Trepine Bur to identify the position and drill accurately

**Fig 2.** Choose Trepine depending on the thickness of the remaining bone and drill again over the hole made by Point Trepine Bur

**Fig 3.** Use Window Opener to fracture and remove the window wall.

**Fig 4.** Completely remove the remaining window wall with Express Bur

**Fig 5.** Use Membrane Elevator 001 through the hole to perform the first membrane lift through the hole.

**Fig 6.** Use Membrane Elevator 002 to elevate the membrane.

**Fig 7.** Graft with autogenous bone collected or alloplastic material. Place the fixture.

**Fig 8.** Close with the window wall.

**Fig 9.** Suture

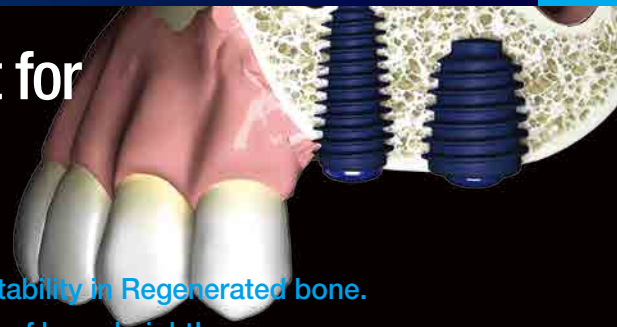
OVER

10 YEARS

The AnyRidge Way

IMPLANT PARADIGM SHIFT SINCE 2009

# AnyRidge is Perfect for Sinus lift with MICA & MILA Kit



AnyRidge Knife thread has perfect stability in Regenerated bone.  
Incredible stability even in only 3mm of bone height!

## NEW Express Bur

- Combined function of Diamond Drill and Reamer Drill.
- The smooth surface makes cleaning easy and leaves no residue after cleaning.
- Stopper provides safe drilling without damaging a membrane even when visibility is poor.

## ASBE Trepine Bur with Stopper!

- Drilling to your desired depth.

## Window opener that opens like magic!

- There is no additional cost for using Membrane after Grafting.



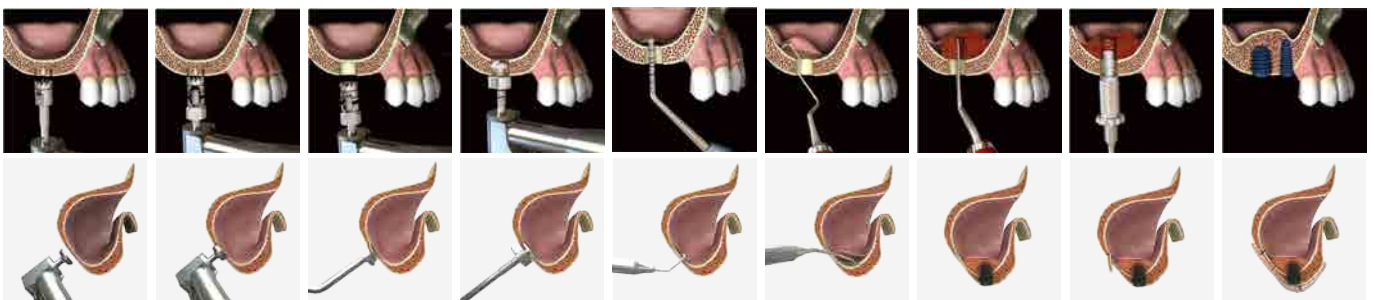
Crestal approach  
**MICA kit™**  
(MegaGen Implant Crestal Approach Kit)

Non-blind crestal sinus lift

Lateral approach  
**MILA kit™**  
(MegaGen Implant Lateral Approach Kit)

3-step lateral window, preserving bone

Simplified procedures for ideal sinus lift either laterally or crestal approach.



Have you made the PARADIGM SHIFT yet?

## Do it the AnyRidge Way

### Excellent primary stability with Knifethread®

- For smooth insertion & stronger primary stability
- No cutting edge for minimal invasion
- Perfect results with any bone condition

### Excellent secondary stability with Xpeed®

- Faster & stronger osseointegration
- Surface technology incorporating Ca<sup>2+</sup> ions on S-L-A treated surface
- 100% acid-residue-free surface



## ➔ Clinical Cases - Courtesy of Dr. Samuel Lee

**Fig 1.** Trehine Bur : Trehine with 1mm external stopper

**Fig 2.** Point Trehine Bur : Make an exact point to drill

**Fig 3.** Window Opener : Detach window wall

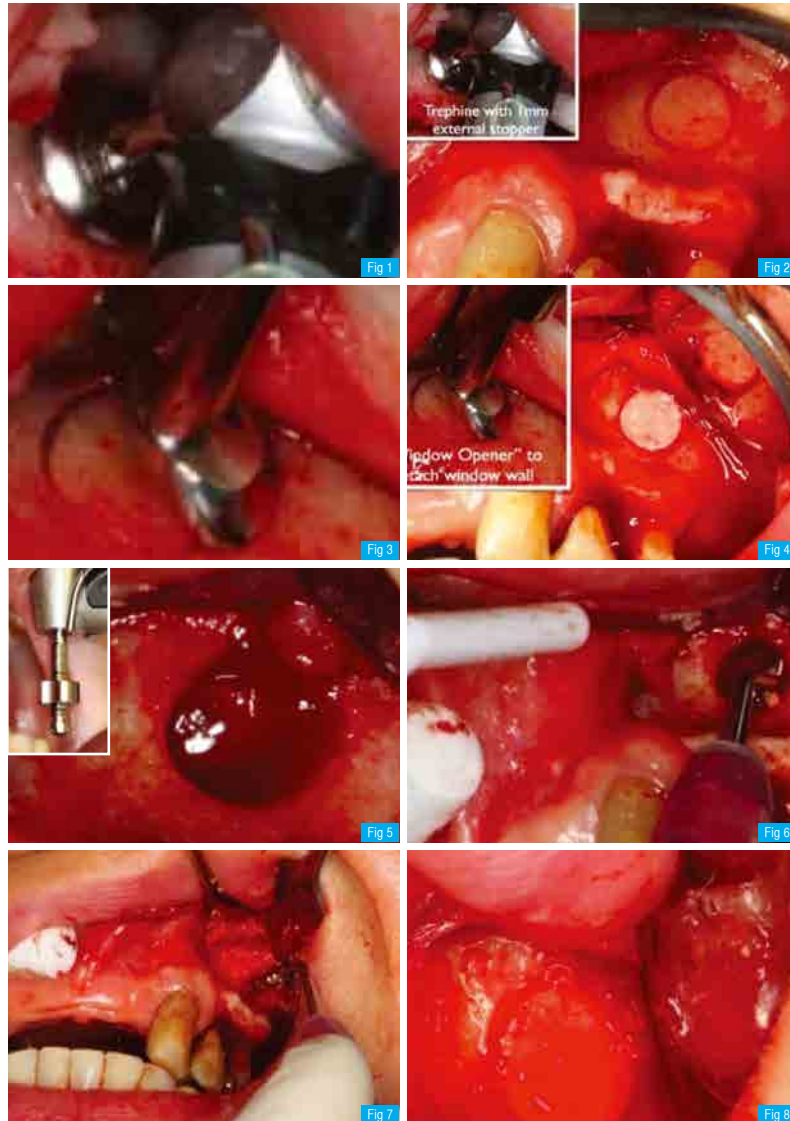
**Fig 4.** Window Opener : Remove the wall

**Fig 5.** Express Bur : Completely remove the remaining window wall

**Fig 6.** Elevator : Lift membrane

**Fig 7.** Graft : Autogenous bone collected or alloplastic material

**Fig 8.** Previously detached window wall was tapped into the position to prevent soft tissue migration into the sinus bone grafting



NEW PRODUCT

## III. Sinus Combination Kit

Sinus Combination kit consists of components which enable both the sinus lateral approach technique and sinus crestal approach technique with one kit.

Type	Ref.C
Sinus Combination Kit	DTST-7110

- ➔ *Essential components for Sinus Lift & Elevation technique*
- ➔ *Convenience for users as the Sinus Combination Kit*

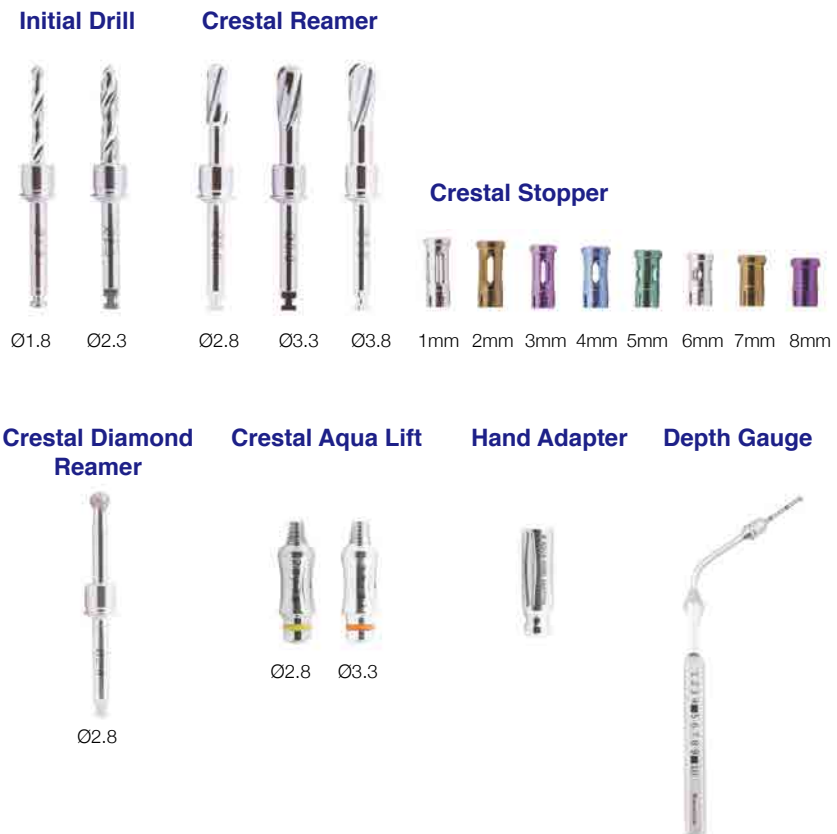


### Sinus Combination Kit consists of

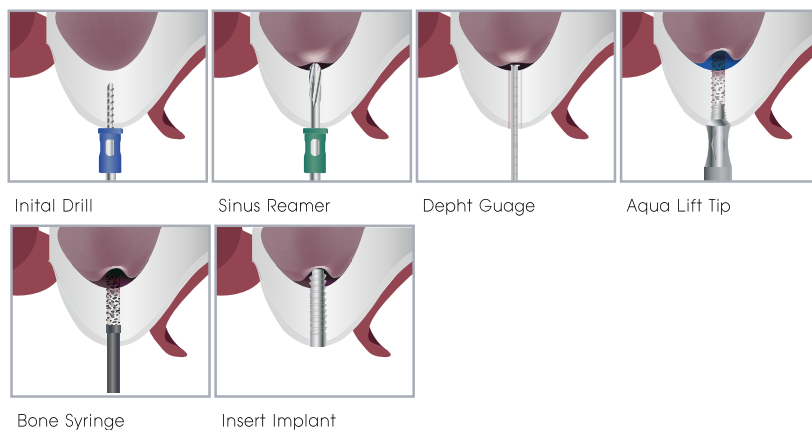
- |   |   |
|---|---|
| 01. Initial Drill: Ø1.8 Drill, Ø2.3 Drill [2EA] | 08. Lateral Stopper: 5EA                |
| 02. Crestal Reamer: Ø2.8, Ø3.3, Ø3.8 [3EA]      | 09. Lateral Reamer: Ø8.0, Ø6.5 / Ø8.0   |
| 03. Crestal Stopper: 8EA                        | 10. Lateral Core Drill: Ø7.0            |
| 04. Crestal Diamond Reamer: Ø2.8                | 11. Lateral Diamond Reamer: Ø6.5 / Ø8.0 |
| 05. Crestal Aqua Lift: Ø2.8 / Ø3.3 / Ø4.2       | 12. Lateral Side Drill: Ø3.0            |
| 06. Aqua Hand Adapter                           | 13. Lateral Diamond Core Reamer: Ø7.0   |
| 07. Depth Gauge                                 | 14. Sinus Curette: 5EA                  |

## ➔ Crestal Components

### 1. Components



### 2. How to Use



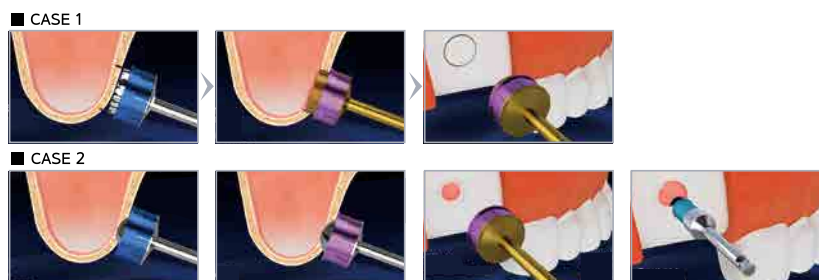
- Select the appropriate drill stopper according to the bone thickness in the patient's x-ray
- For accurate and safe drilling, always attach the selected drill stopper to each sinus reamer used
- Use the sinus reamers in sequence ( $\text{Ø}2.8$ ,  $\text{Ø}3.3$ ,  $\text{Ø}3.8$ ,  $\text{Ø}4.2$ ) up to  $\sim 0.7\text{mm}$  (depending on the bone density) below the selected implant diameter (800 ~ 1000RPM)
- Use diamond reamer to confirm the detachment of the sinus membrane & to shape any irregularity of the sinus floor.
- Thereafter, follow the normal sinus procedures

## ➔ Lateral Components

### 1. Components



### 2. How to Use



#### Case 1 Protocol

- Select the appropriate drill stopper according to the bone thickness in the patient's x-ray.
- For accurate and safe drilling, always attach the selected drill stopper to the core drill/diamond core reamer
- Use the Ø7.0 core drill or Ø7.0/8.5 diamond core reamer for safer drilling (800~1000RPM)
- Use the diamond reamer to confirm the detachment of the sinus membrane & to shape any irregularity of the sinus floor.
- Thereafter, follow the normal sinus procedures

#### Case 2 Protocol

- Select the appropriate drill stopper according to the bone thickness in the patient's x-ray
- For accurate and safe drilling, always attach the selected drill stopper to the sinus reamer
- Use the Ø6.5 or Ø8.0 sinus reamer to the required depth (800~1000RPM)
- Use the diamond reamer to confirm the detachment of the sinus membrane & to shape any irregularity of the sinus floor.
- Thereafter, follow the normal sinus procedures

NEW PRODUCT

# IV. Simple Sinus Kit

Cost effective!  
 Only includes the essential components you need and use from sinus combination kit.  
 Simple Sinus Kit can be purchased separately which composed essential items from the Sinus Combination Kit

Type	Ref.C
Simple Sinus Reamer Crestal Kit	DTST-7085
Simple Sinus Reamer Lateral Kit	DTST-7120

## 1. Crestal Reamer Kit



### ➔ Components



## 2. Lateral Reamer Kit



### ➔ Components



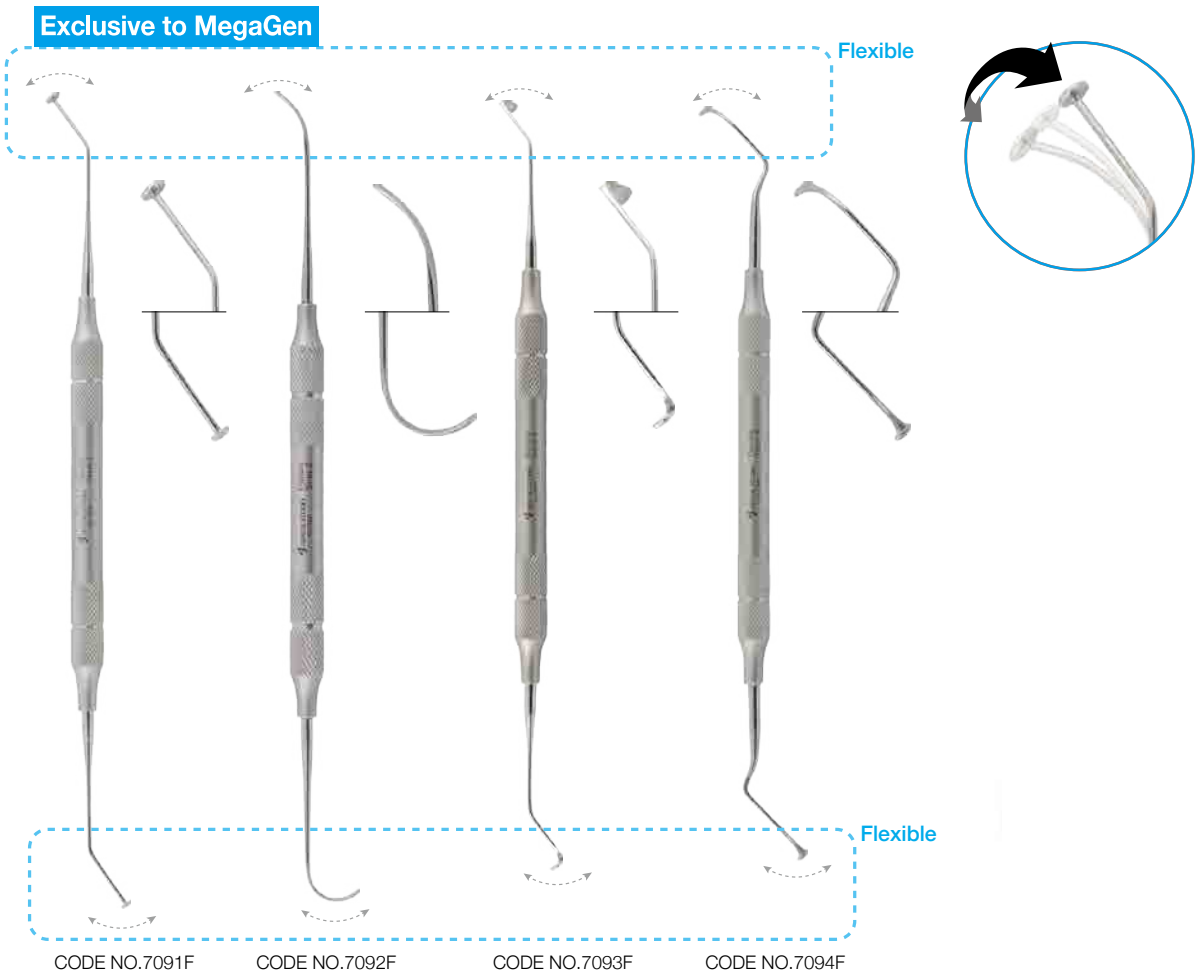


**NEW PRODUCT**

# V. Easy Sinus Flexible Curette

Easy Sinus Flexible Curette adopts the flexible type which can be bent freely. This curettes effectively buffer the sinus membrane during serration,

Type	Ref.C
Easy Sinus Flexible Curette	7091F
	7092F
	7093F
	7094F



## How to Use



## Sinus Elevation Kit



**Head Office & Factory**  
**Gangnam Office**

45, Secheon-ro 7-gil, Dasa-eup, Dalseong-gun, Daegu, Korea  
MegaGen Tower, 607 Seolleung-ro, Gangnam-gu, Seoul, Korea

**T. +82-1544-2285**  
**T. +82-1566-2338**